

ACCESSORIES

Car Adapter

Enables you to re-charge your battery with your vehicle's electrical system.



Part No. 900507

Battery Cell



Part No. 404717

Battery Charger Kit

(Replacement Charger Base Only Part No. 035460)
(Replacement Transformer Only Part EU No. 900505)
(Replacement Transformer Only Part UK No. 900506)



Part No. 900200

No-Mar Tip - 3 Pk. - Hard Tip



Part No. 901048

No-Mar Tip - 3 Pk. - Soft Tip



Part No. 901067

9/64" Hex Key

For cleaning tool.



Part No. 900736

Orange Safety Glasses



Part No. 011117

Paslode Intensive Tool Cleaner 300 ml



Part No. 115251

Paslode Impulse Lubricating Oil



Part No. 401482

Carrying Case



Part No. 013301

Cleaning Kit

Contains all the necessary to clean any Impulse tool



Part No. 013060



An Illinois Tool Works Company
Route de Lyon - BP 104
F - 26501 Bourg Les Valence - Cedex France



Part No. 013330 (EU), 013331 (UK)

18 GAUGE STRAIGHT FINISH NAILER



IM50 F18

IMPORTANT! DO NOT DESTROY

Always refer to operating and safety instructions (#013395 & #013207) for detailed information on this tool. It is the customer's responsibility to have all operators and service personnel read and understand this information.

TOOL SCHEMATIC AND PARTS

PARTS LEGEND

IM50 F18

Part No. 013330 (EU), 013331 (UK)

1	013715	1	Grill black	56	013707	2	Housing Label
*2	900648	1	Filter	57	013711	1	Nameplate
3	901064	4	S.H.C.S. 8-32 x 1-3/8"	58	404385	1	Light Pipe
4	900785	1	Spark Plug Sleeve	59	013714	2	P Handle Label
5	902011	1	Cap black	60	900289	1	Belt Hook
6	901119	1	Retaining Ring	61	901019	1	Torsion Spring Magazine Latch
→ 8	901382	1	Fan Motor Assembly	62	900353	1	Pivot Pin
* 13	401356	1	Motor Sleeve	63	901014	1	Magazine Latch Release
14	900714	1	Spark Plug Assembly	64	901061	2	Screw 6-32 x 3/16 BH
15	900674	1	Wire Clip	66	901013	1	Magazine End Cap
16	900697	1	Stem Adapter	67	013671	1	Warning Label Top
■ 17	405140	4	Screw 8-32 x 7/16" (red)	68	013672	1	Warning Label Bottom
18	900596	1	Screw, Sem 8-32 x 7/16"	69	404922	2	Battery Contact Pad
19	900739	1	Cylinder Head Circuit Board Ass.	70	901095	1	Switch Side Assembly
20	900605	1	Cylinder Head	71	900792	2	Shoulder screw 8-32 x 15/82"
21	900612	4	Seal Ring	73	901084	1	Magazine Wear Strip Assembly
22	900709	1	Fan Assembly	▲ 74	900660	2	Screw 10-32 x 3/8"
23	900700	1	Air Dam	75	901062	1	Screw 6-32 x 1/8"
24	900729	1	Combustion Chamber Assembly	76	901012	1	Magazine Cover
25	900746	2	Screw 8-32 x 7/16 phtx	77	901015	1	Follower
26	901038	1	Spring	78	901018	1	Magazine Pin
27	901037	1	Yoke	79	901055	1	O-ring
28	901039	1	Yoke Support	80	901052	1	Spring Cover
29	901029	1	Yoke Guide	81	901016	1	Constant Force Spring
30	900734	1	Roll Pin	82	901017	1	Spool Spring
31	900645	1	Ball, Knob	85	013701	1	Handle assembly - Right & Left
32	900361	1	Retaining Clip	86	901066	4	Screw- Plastite
33	900727	1	Knob Assembly	87	900703	1	Handle Bracket
34	901009	1	Latch Cover Quick Clear	88	900755	1	Bushing Actuator
35	900685	1	Spring Pin	89	900788	1	Actuator Assembly
36	901005	1	Latch Clip	90	404433	1	Pin Actuator
37	901049	1	Spring Pin	91	900765	1	Spark Plug Wire Assembly
38	901006	1	Spring Clip Assembly	92	900663	1	Fan Wire Assembly
39	901002	1	Front Plate	93	901050	1	Molded Circuit Assembly
40	901048	1	Probe Tip	*94	901021	1	Piston Bumper
41	901007	1	Probe	95	901078	1	Piston Assembly
42	901026	2	Screw 10-24 x .75	96	901040	1	Piston Ring
43	901003	1	Back Plate	97	901036	1	Retaining Ring
44	901025	1	Support Pin	98	901044	1	Soft Grip
45	901004	1	Front Plate Support	99	900672	1	Electronic Spark Unit
46	901081	1	Sleeve Assembly	100	900662	1	ESU Power Wire Assembly
47	900616	1	O-Ring	101	901045	1	Trigger
48	901089	1	Exhaust Baffle	102	900608	1	Trigger Spring Bushing
49	900665	1	Reed Plate	103	901047	1	Trigger Pin
50	900664	1	Reed Valve	104	901053	1	Trigger Spring
51	900609	1	Muffler	105	404702	3	Screw 6-32 x 3/8"
52	900668	1	Muffler Cover	106	900629	1	High Tension Clip
54	901059	1	Front Channel	107	900312	1	Contact Positive
55	900598	2	Screw 10-32 x 5/16" (red)	108	900311	1	Contact Negative

■ Apply Loctite RC-620 (Green) Part No.401491

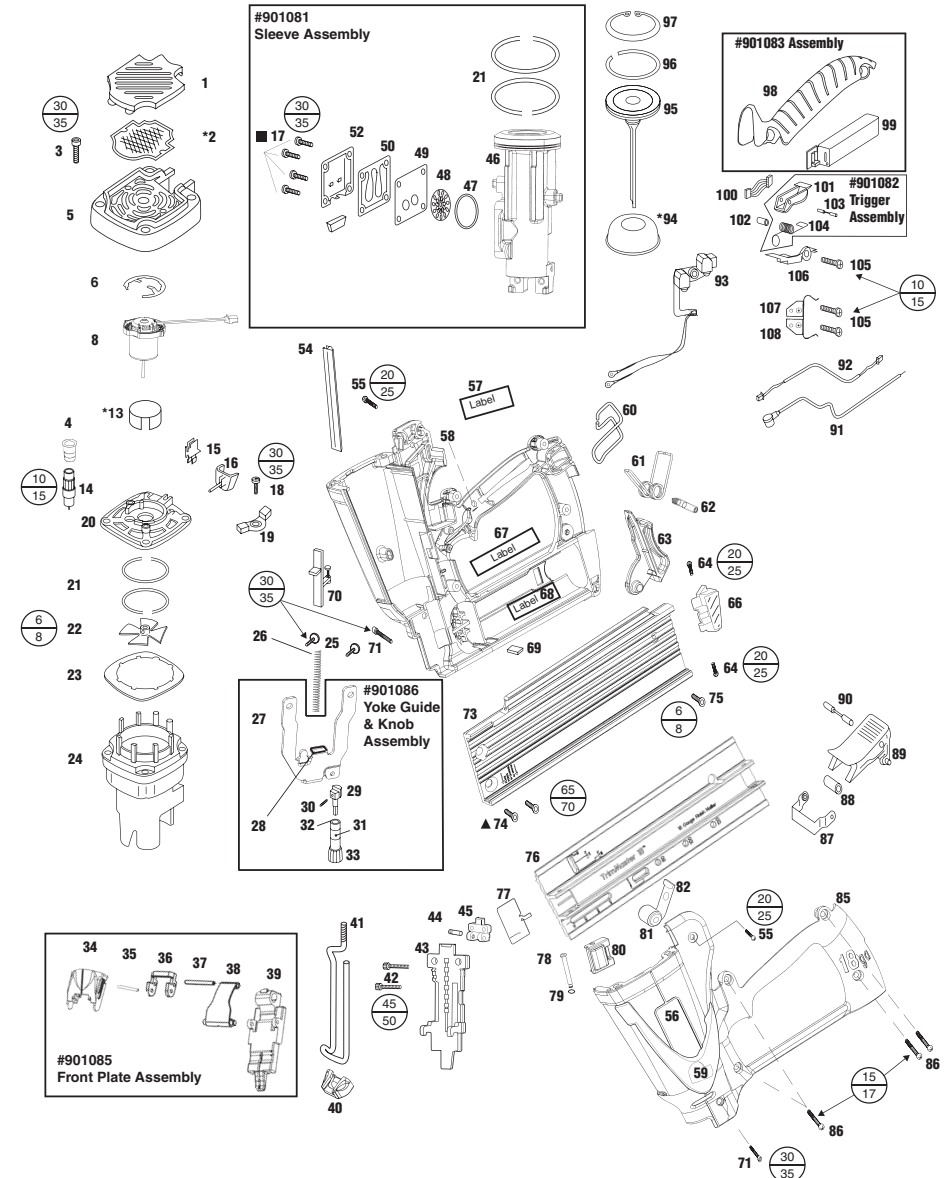
▲ Apply Loctite 277

* Denotes Normal Wear Items

→ Denotes Change

IM50 F18

Part No. 013330 (EU), 013331 (UK)



TORQUE VALUES

MIN	IN.LBS
MAX	

⚠ WARNING

All parts must be periodically inspected and replaced if worn or broken. Failure to do this can affect the tool's operation and present a safety hazard