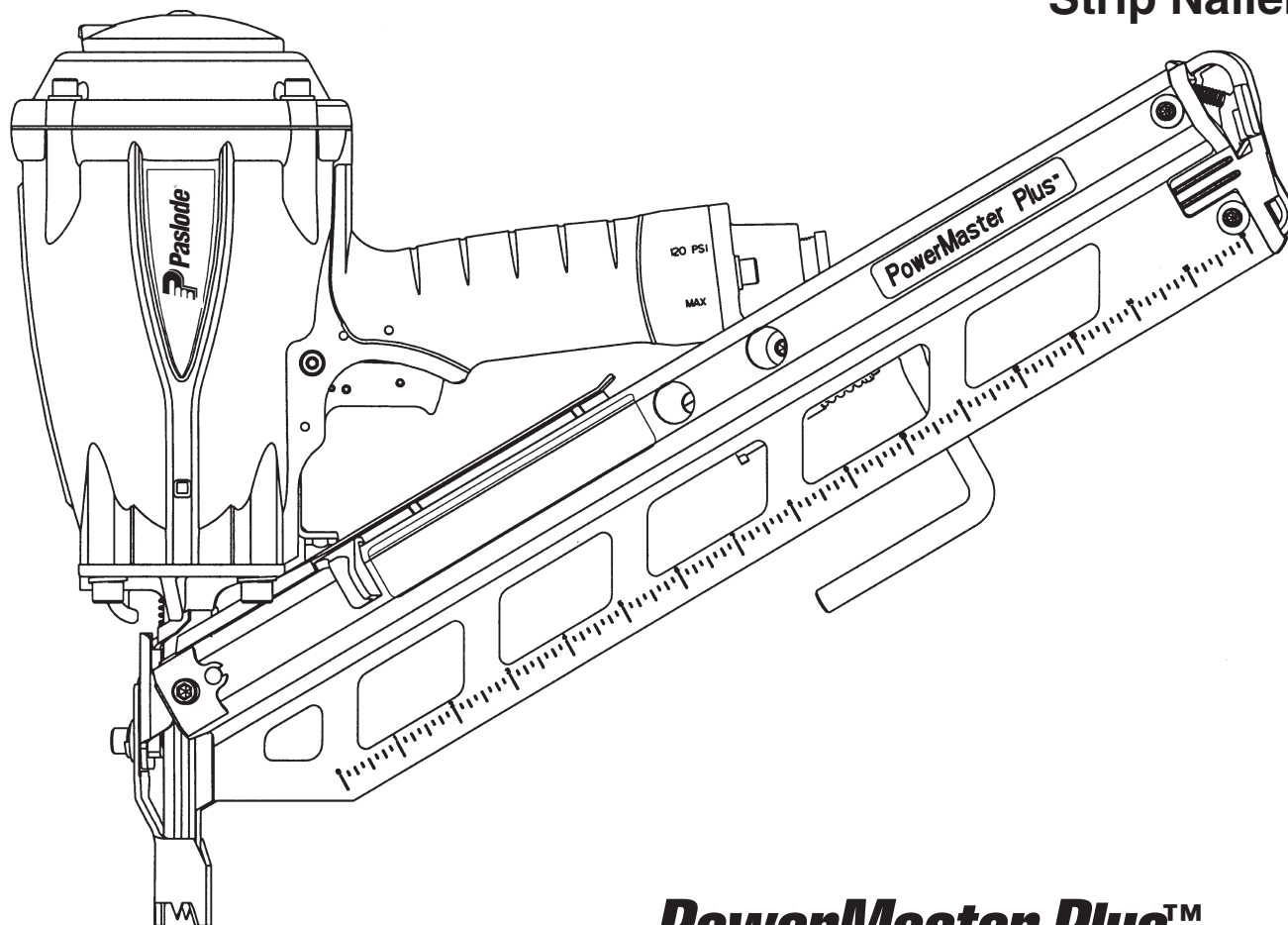




PowerMaster Plus™
MODEL F-350S
Strip Nailer



PowerMaster Plus™

**IMPORTANT!
DO NOT DESTROY**

Always refer to safety and maintenance manual #403606 for detailed information on this tool. It is the customers responsibility to have all operators and service personnel read and understand this information.

**TOOL SCHEMATIC AND
PARTS**

PARTS LEGEND *PowerMaster Plus™* F-350S, 501000

| | | | | | | | |
|------|--------|---|---------------------------|------|--------|---|------------------------|
| ▲ 1 | 501043 | 1 | T.H.S.C.S. 1/4 -20 x 1/2" | 40 | 097748 | 1 | Spring, Valve Pin |
| 2 | 501016 | 1 | Air Deflector | 41 | 097746 | 1 | Valve Pin |
| 3 | 501300 | 4 | S.H.C.S. 1/4-20 x 1-1/4" | 42 | 071297 | 3 | Roll Pin 1/8 x 1-1/8" |
| 4 | 500249 | 1 | O-Ring, Sleeve | *43 | 092174 | 1 | O-Ring, Valve Body |
| 5 | 501017 | 1 | Cap | 44 | 401958 | 1 | Valve Body |
| *6 | 500461 | 1 | O-Ring | 45 | 501039 | 1 | Sequential Trigger |
| *7 | 092042 | 2 | O-Ring | 46 | 501156 | 1 | Nose 30° |
| 8 | 500407 | 1 | Spring, Main Valve | 47 | 095417 | 4 | Lockwasher 5/16 |
| *9 | 501001 | 1 | Gasket, Cap | ▲48 | 009016 | 4 | S.H.C.S. 5/16-18 x 1" |
| 10 | 406041 | 1 | Retaining Ring | 49 | 501006 | 1 | Spring, W.C.E. |
| 11 | 500455 | 1 | Upper Valve Piston | 50 | 501363 | 1 | Upper W.C.E. |
| 12 | 401946 | 1 | Seal, Main Valve | 51 | 404800 | 1 | Washer, W.C.E. |
| *13 | 091208 | 1 | O-Ring | 52 | 500731 | 1 | Lower W.C.E. |
| *14 | 401950 | 1 | O-Ring | 53 | 002187 | 1 | Lock Washer |
| 15 | 500456 | 1 | Lower Valve Piston | 54 | 500717 | 1 | Nail Cover |
| 16 | 500454 | 1 | Post | 55 | 500531 | 1 | Follower |
| *17 | 095432 | 1 | O-Ring | 56 | 501044 | 1 | 3/16 Hex Key, Long Arm |
| 18 | 500453 | 1 | Bumper, Post | 57 | 501024 | 1 | End Cap, Magazine-LF |
| 19 | 402906 | 1 | B.H.S.C.S.10-32 x 5/8" | 58 | 501025 | 1 | End Cap, Magazine-RT |
| *20 | 092971 | 1 | O-Ring, Piston | 59 | 501027 | 1 | Latch |
| ■*21 | 501218 | 1 | Driver Blade | 60 | 501046 | 1 | Drum Pin Assembly |
| 22 | 402011 | 1 | Seal Sleeve | 61 | 500513 | 1 | Negator Assembly |
| 23 | 501283 | 1 | Sleeve | 62 | 501481 | 1 | Nameplate |
| *24 | 092235 | 1 | O-Ring, Sleeve | ▲63 | 404904 | 2 | Screw 1/4-28 x 5/8" |
| *25 | 501002 | 1 | O-Ring | 64 | 500509 | 1 | Front Bracket |
| *26 | 500866 | 1 | Bumper | 65 | 501028 | 1 | Spring, Latch |
| 27 | 501286 | 1 | Housing | 66 | 501026 | 1 | S.H.C.S. 8-32 x 2" |
| 28 | 500779 | 1 | Flange, Sleeve | 67 | 066840 | 1 | S.H.C.S. 8-32 x 3/4" |
| 29 | 501333 | 1 | Label, Housing-Left | 68 | 404414 | 2 | Flatwasher #8 |
| | 501334 | 1 | Label, Housing -Right | 69 | 404325 | 2 | Stop Nut |
| 30 | 501219 | 1 | End Cap, Housing | 70 | 500520 | 2 | Wear Strip |
| 31 | 500516 | 1 | B.H.S.C.S. - Special | **71 | 500458 | 1 | Warning Label |
| 33 | 500525 | 1 | Locknut, 5/16-24 | 72 | 501055 | 1 | Logo Label |
| 34 | 091622 | 1 | Reducing Pipe Bushing | 73 | 501347 | 1 | Rafter Hook Assembly |
| 35 | 501010 | 1 | Bump Trigger | 74 | 500729 | 1 | Blade Seal |
| 36 | 402669 | 1 | Pin, Trigger | 75 | 501337 | 1 | Piston |
| 37 | 501009 | 1 | Spirol Pin | 76 | 091618 | 1 | S.H.C.S. 1/4-20 x 1/2" |
| 38 | 501008 | 1 | Lever, Bottom Trip | 77 | 501299 | 2 | S.H.C.S. 1/4-20 x 1" |
| 39 | 402668 | 1 | Retaining Ring | | | | |

* Denotes Normal Wear Items

** Make sure Warning Label (Part No. 500458) is properly affixed. Replace if necessary. Label available at no charge through the Service Department.

▲ Apply Loctite 242 (Blue) Part No. 093500

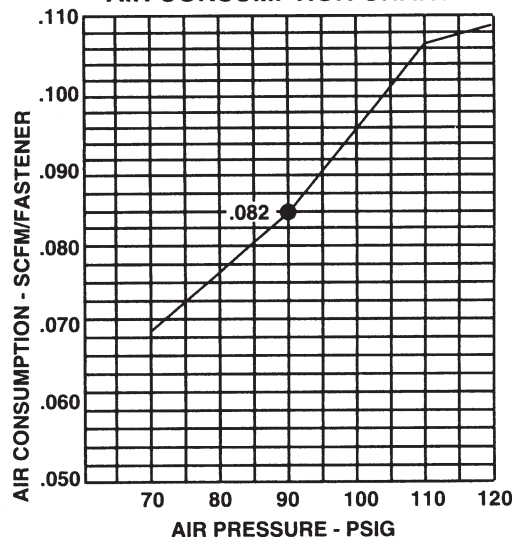
■ Apply Loctite Green Part No. 401491

→ Denotes New Change

WARNING

All parts must be periodically inspected and replaced if worn or broken. Failure to do this can affect the tool's operation and present a safety hazard.

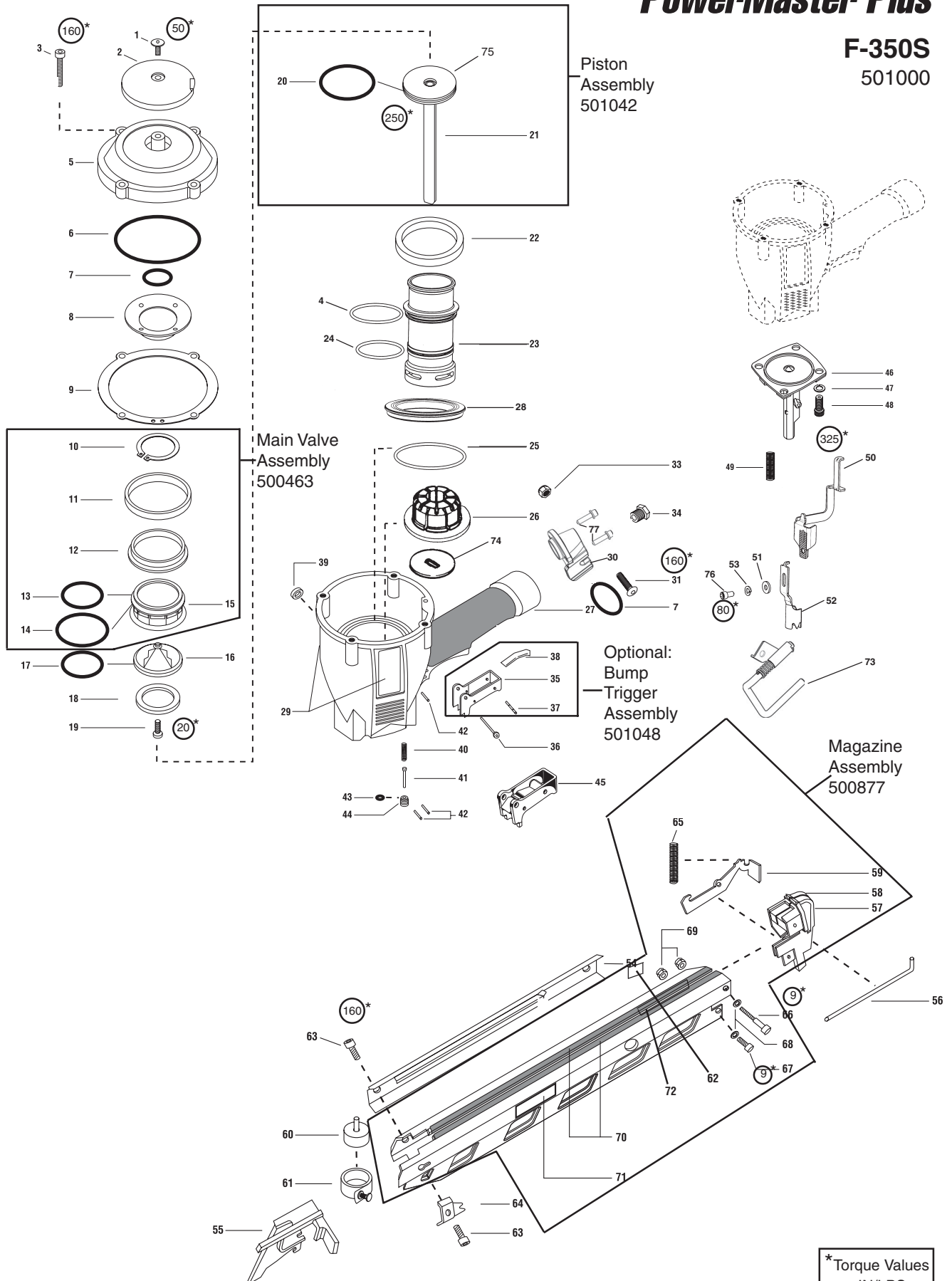
AIR CONSUMPTION CHART



Note: For optimum performance Paslode recommends the use of a 3/8" Male fitting.

PowerMaster Plus™

F-350S
501000

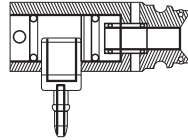


*Torque Values
IN/LBS

ACCESSORIES

Remote Fire Valve

This valve via a positive air signal allows a machine mounted tool to be operated from an automatic air valve or foot pedal system.



Part No. 1X0713

Adjustable No-Mar Tip Kit

Prevents you from marring wood surfaces. Kit includes an extra rubber tip. (Replacement Rubber Tip only - Part No. 501022)

Part No. 219228

Hanger Kit

Allows you to hang tool from rafters.

Part No. 501049

Cap Hanger Bracket

Attaches to the top of tool for storage or counter-balancing.

Part No. 1X0856

Tool Repair Kit

Repairs cap air leaks, lack of power, skipping and/or sluggishness.

Part No. 219235

Trigger Valve Kit

Repairs trigger valve air leaks.

Part No. 219224

Lubricants and Loctite

Loctite 242 (Blue)
Lubricating Oil 16 oz.
Lubricating Oil with Antifreeze
Chemplex 710 Lubricant 1 lb.
Lubricant 5 gram tube



Part No. 093500
Part No. 403720
Part No. 219090
Part No. 403734
Part No. 219188

Degreaser Cleaner

Ideal cleaner for all Paslode tools.

Part No. 219086

Large Nylon Tool Case

Part No. 219246

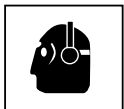
Safety Glasses

Clear
Tinted

Part No. 402510
Part No. 402512

SAFETY INSTRUCTIONS

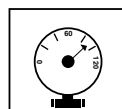
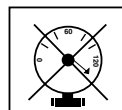
WEAR EYE AND HEARING PROTECTION



Always wear hearing protection and eye protection devices, including side shields when operating or working in the vicinity of a tool.

Never use any bottled air or gases such as oxygen to operate the tool since they could cause the tool to explode.

DO NOT EXCEED MAXIMUM RECOMMENDED AIR PRESSURE



Operate the tool using only the recommended air pressure. Do not exceed the maximum air pressure marked on the tool. Be sure the air pressure gauge is operating properly and check it at least twice a day.